

# Подделки пальмирских надписей

НУГ «Семитская эпиграфика в цифровую эпоху»

# Погребальный рельеф 1

Lipiński 1998



# Материал



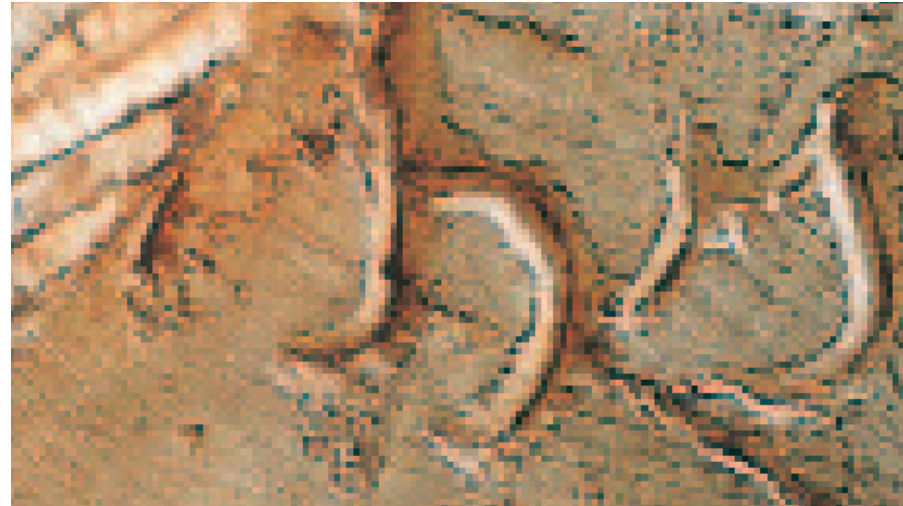
«The figure is carved in hard white limestone with a colouring shading into pink »

# Надпись



*Šl brt*  
*Zbyd' br*  
*Wly ḥbl*  
*b'mt*

“Shall, daughter of  
Zabîdā, son of  
Waliy. Woe  
among (her) people!”



# Надпись

*šl* в пальмирском ономастиконе не встречается (Stark 1971).

*b 'mt* 'among (her) people' – такая последовательность никогда не была зафиксирована в надписях на рельефах, равно как и в других пальмирских надписях.

# Погребальный рельеф 2







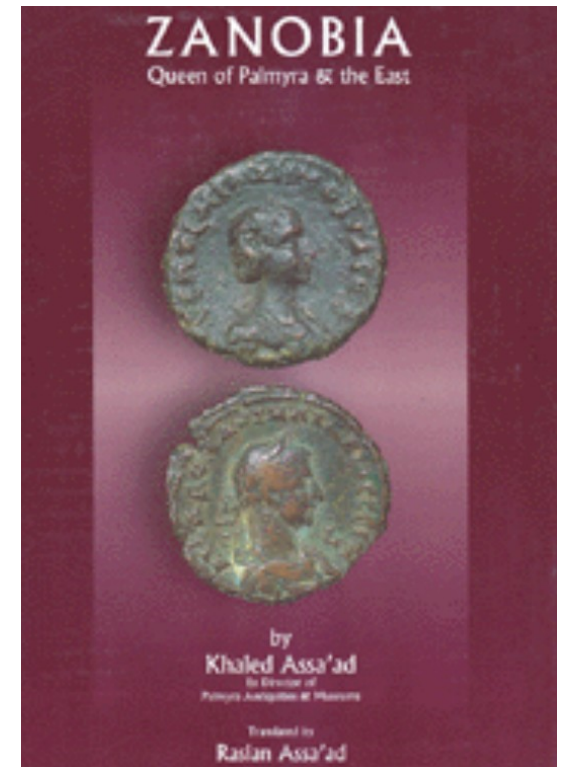
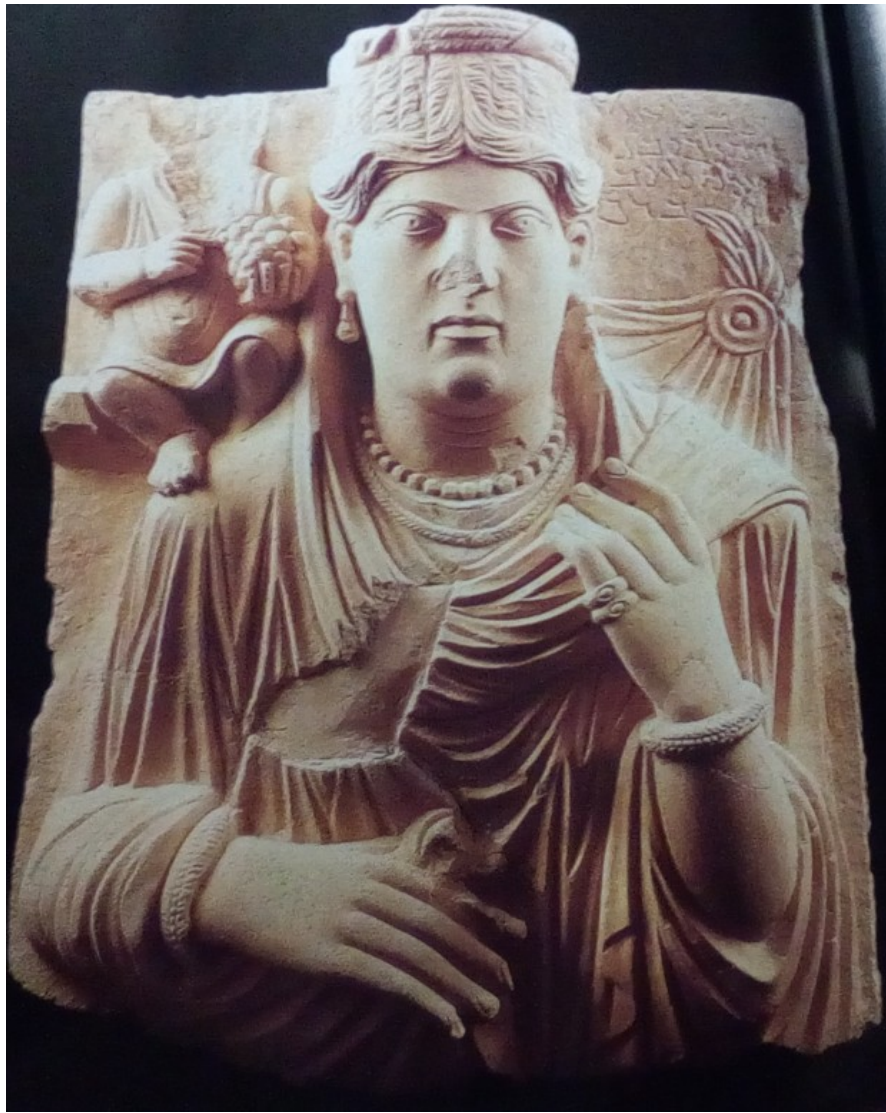
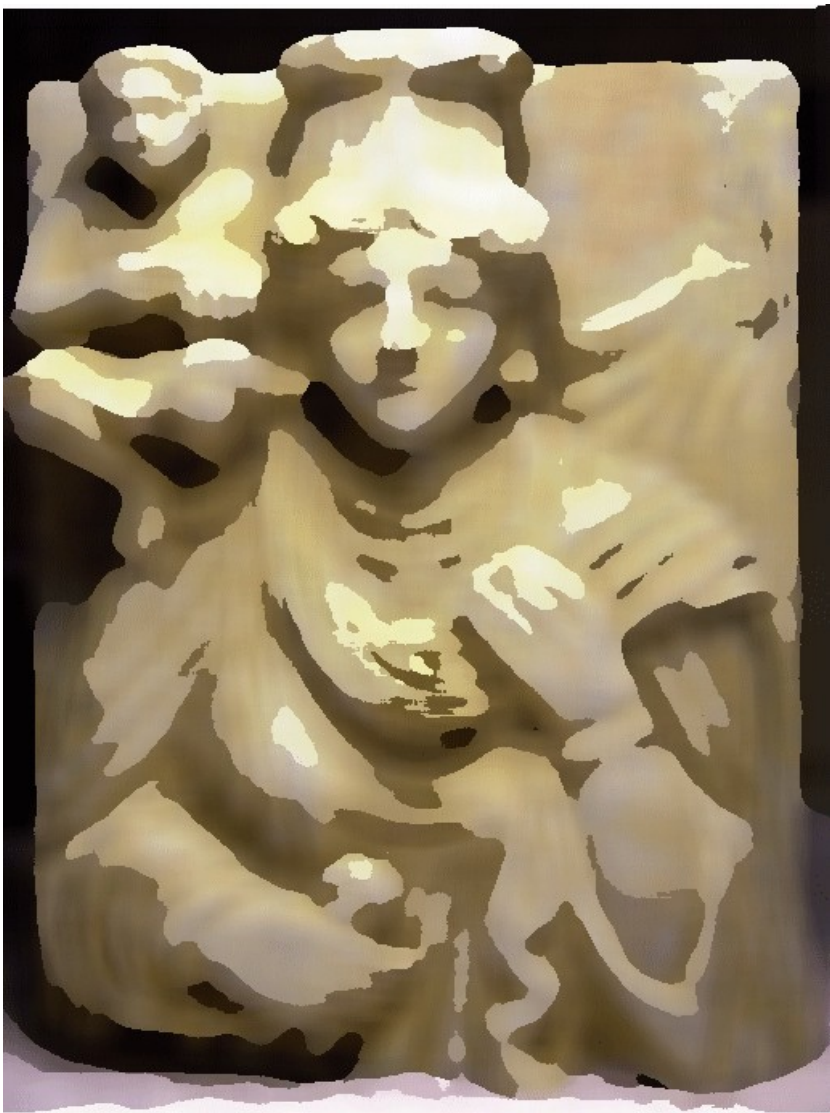


1. bybl“

2. lbyrn

3. nmlzb

4. brky



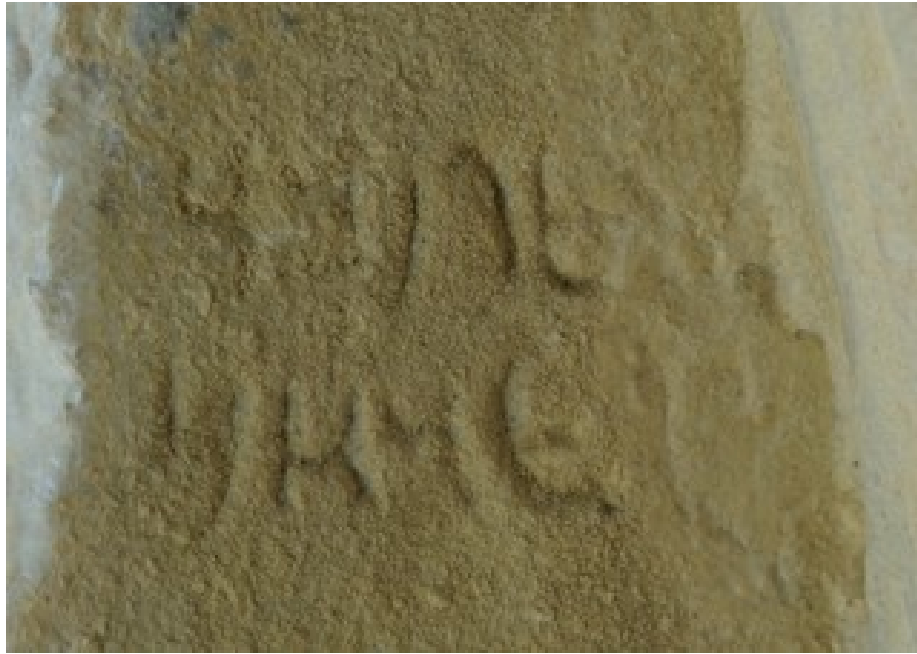
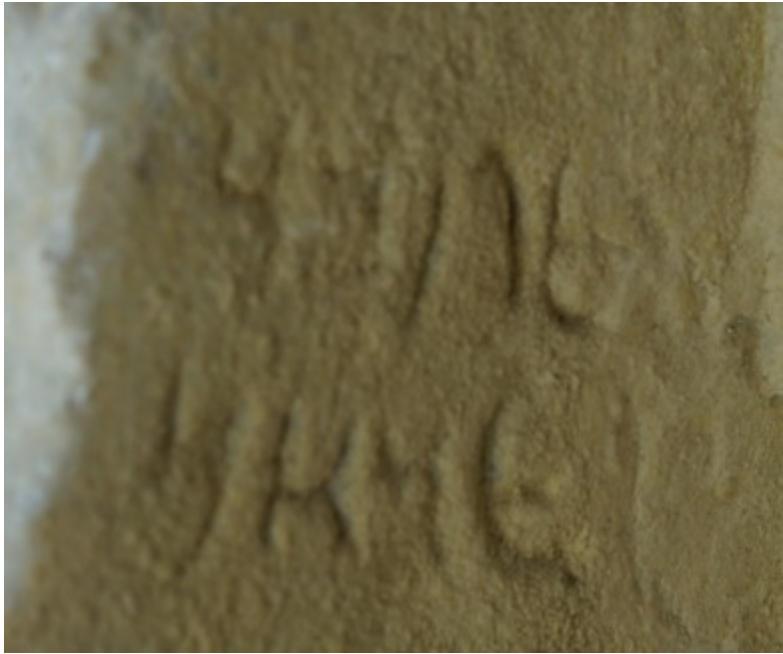



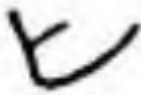
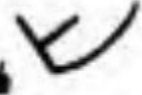


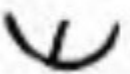




*hbl 'tm  
wmlkw bny  
[š]lmlt b[r]  
bryky*

# Погребальный рельеф 3





312  313  314  315  316 

317  318  319  320  321 



Масляная лампа



HB

HARLAN J. BERK, LTD

ca.  
100-150  
AD

Syrian Palmyra Oil Lamp with  
Inscription

PAT 1593 **IP 67**

**n. d.**

Prov: Palmyra, W necropolis. Loc: Palmyra  
Museum. *Funerary. On lamp.* Bib: HNE p 483,  
pl XLII, 1.

1 'glbwl wmlkbl

Lidzbarski

Harlan J. Berk LTD

<https://www.ma-shops.com/harlanberk/item.php?id=5640>







