

Публикации эпитафических памятников из музеев Москвы и Санкт-Петербурга



Аммонитская печать ДВ-6609



Accession no. ДВ-6609

Current location (incl. place in the museum): State Hermitage Museum, St Petersburg.

Dimensions: 15 x 15 mm.

Medium: steatite.

Condition: damaged by rims.

Acquisition: purchased by the Imperial Hermitage in 1911 from from Osman Nuri Bey, Ottoman antique dealer together with dozen byzantine metalwork items and one lead dreidel/sevivon (M. Sologubova, p. c.).



Чтение надписи

[l]ʔlšʕ / bn / [b]‘d’[l]

[l][l]עשלח / ב / [ב]אדל

‘Belongs to Eliša, son of Ba‘di‘el’

Принадлежит ?Элишеʕ, / сыну / Баʕдиʕэла

Ономастикон

ʔЭлишаʕ

ʔlyšʕ ʔIl is salvation 18:3?, 30:3, 38, 45:3, 47:11:3, 79:1,
120:3, 184:1

Баʕдиʔэл

The inscribed object mentioned above as found in the British excavations at 'Ain Shems is a small scarab seal, published in the *P. E. F. Annual*, II (1912-1913), pp. 91 f. (with an enlarged facsimile of the impression) and Plate LXI, 1. See also David Diringer, *Le Iscrizioni Antico-Ebraiche* (Firenze, 1934), pp. 206 f. and Plate XX, fig. 18. The reading hitherto adopted is: above the line, אֵלִישָׁע ; below the line, בְּעֵדָאֵל . The date indicated by the archaeological evidence is given as c. 700. The inscription has received no satisfactory interpretation (see Diringer).

The onomasticon may be instructive—El names are the majority, and names compounded with 'mš, ḥnn, ndb and tmk abound.

Иконография. Изображение – в среднем регистре на аммонитских печатях



867



868



884

Расположение *bn* в среднем регистре



981

Zuckerman 1987



991



Deutsch, Lemaire 2000, n. 163

Иконография: “charging young bull / galloping bull”



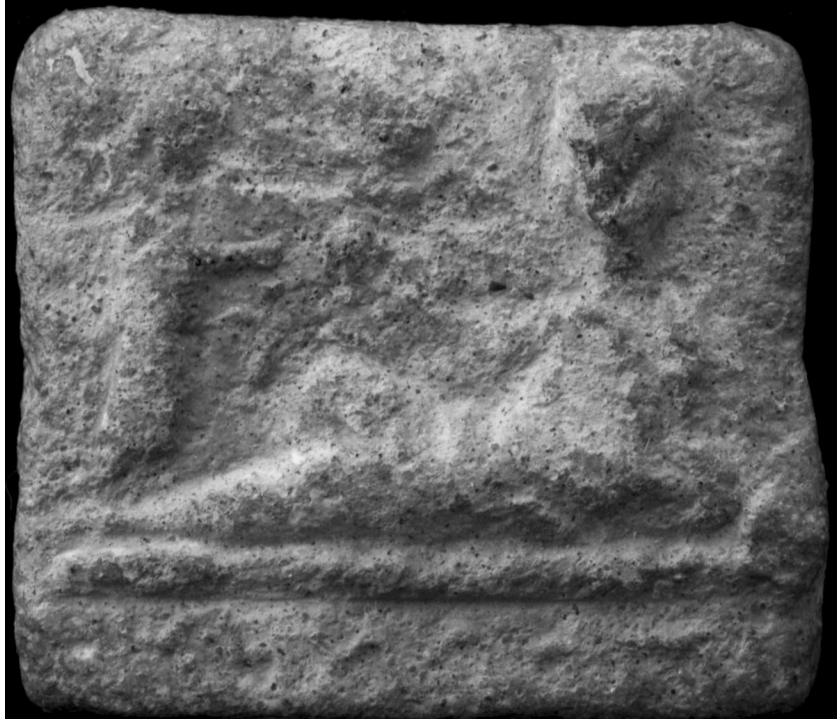
Ammonite; charging young bull; l'y' / bn / tmk'l

Sass, Uehlinger (eds.) 1993, XV, 274

- Even in his 1941 article, Galling marginally addressed the question of the religious meaning of specific motifs: Where a bull is represented on a seal, "wird man kaum an eine einfach naturalistische Wiedergabe zu denken haben. Das Tier stellt symbolisch die übermenschliche Kraft dar", or "kann man bei Löwe und Stier fragen, ob nicht eine Anspielung auf ein Göttertier vorliegt oder ein Hinweis auf die übermenschliche Mächtigkeit, die im Sinne magischer Kraftübertragung dem Siegelbesitzer gilt, so daß das Siegel in die Nähe des Amuletts rückt. Bei den Bildern des säugenden Muttertieres dürfte eine Anspielung auf die *vis naturae* vorliegen" (*ibid.*: 138, 168)
- Are the running bulls on Ammonite seals or the more 'international' roaring lions to be understood as attribute animals of definite deities, or do they simply denote super-human strength and vigour?⁶³ This question was formulated fifty years ago by Galling (see *supra*, p. XV), and it has still not found a clear-cut solution.

Пальмирские тессеры из ГМИИ

1. 262; = RTP 781



RTP 781



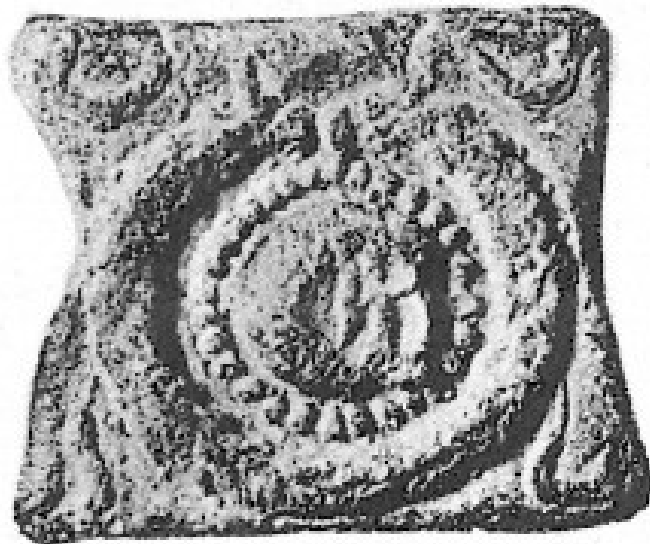
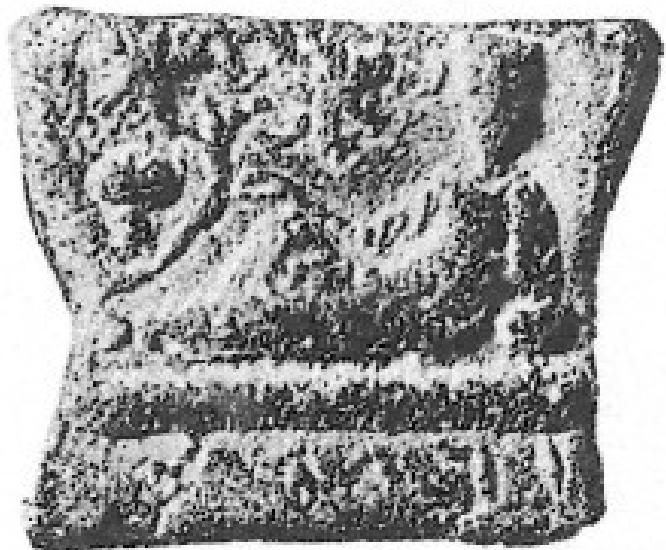
781

No. 262, RTP 781



Prêtre étendu sur une couche. A ses
pieds, un serviteur tient une cruche
et lui offre une coupe. En haut,
croissant contenant un astre. Sous
la couche : [...]*ML*[...].

RTP 780



780

En bas : *NBW*[...], *Nébou...*

RTP 779



779



une vigne. En bas : *RPBWL YRH̄Y*,
Rephaból Iarhai.

2. 263; = RTP 713



RTP 713

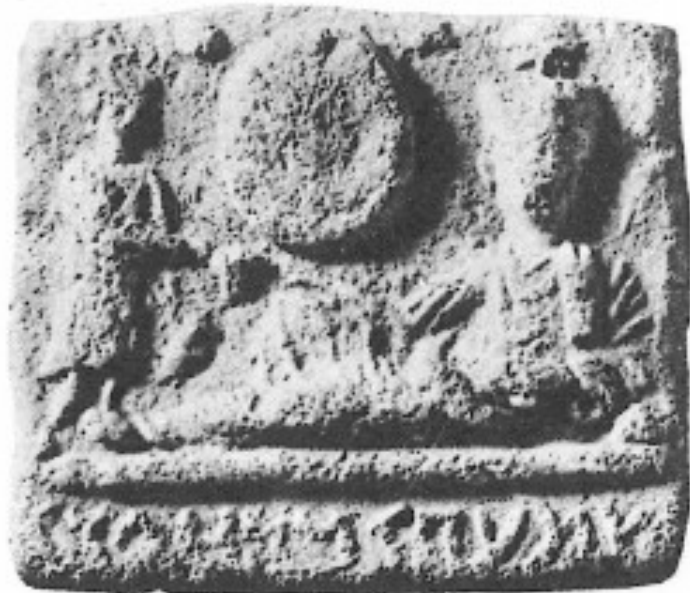


713

3. 264; = RTP 12



RTP 12



12

Надпись 263, RTP 12

a ktrw? dy bl ‘жрецы Бела’

b šmʕwn br ḥurn ‘Шим‘он, сын Хайрана’

4. 265; = RTP 820; ср. 822, ГЭ ДВ-4190, ДВ-4191



265, печать



RTP 820



RTP 822, ГЭ ДВ-4191



sants. En bas : *NBWZBD* | *BR ZBYD'*,
Nébouzabad fils de Zebîda.

9. ГМИИ I.2.В 270 = RTP 822



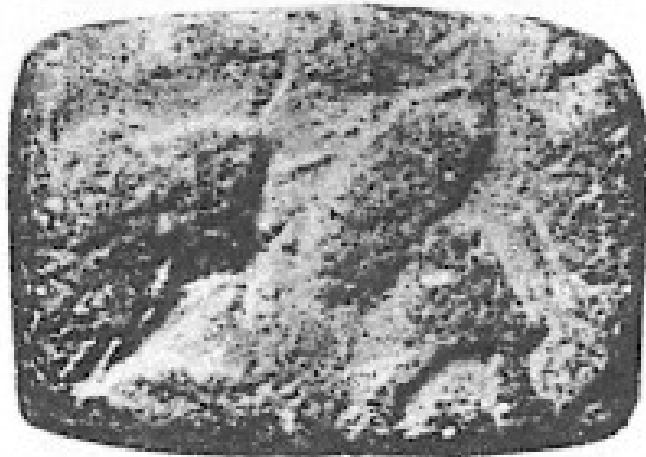
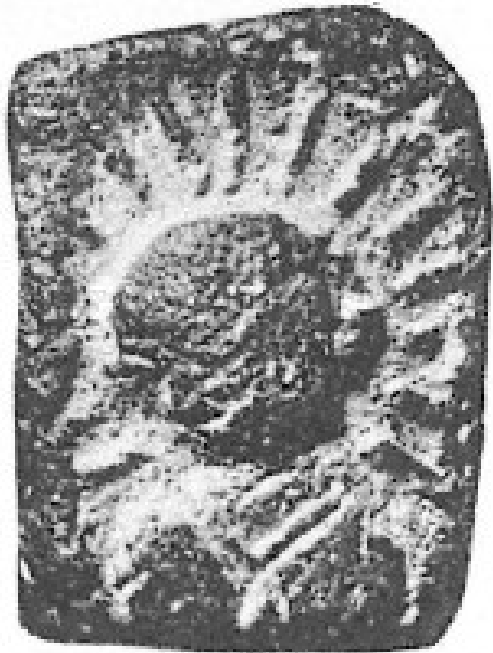
RTP 822



5. 266; = RTP 384



RTP 384



384

6. 267; = RTP 855. *mzbn? nwrbl* 'Мезаббана Нурбел'



RTP 855



855

MZBN³ | NWRBL,

7. 268; cp. RTP 751



RTP 751



8. 269; ?



Изображения бога šdrp? из Пальмиры

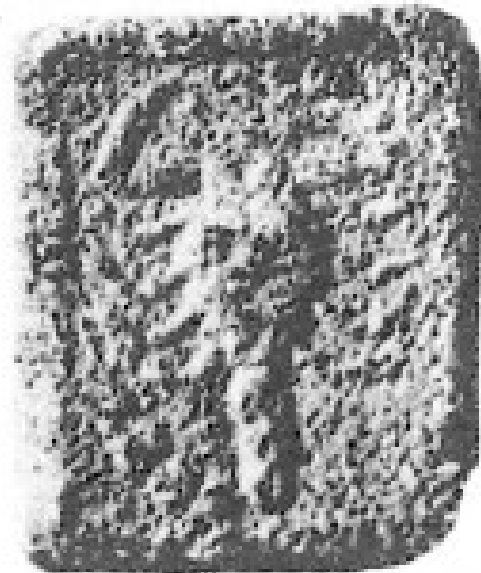
Слева:
вотивная стела,
обнар. в 1954 г.
Музей Дамаска (?)



Справа:
стела с
посвятительной
надписью богу
šdrp?.



RTP 317. *šdrp?*



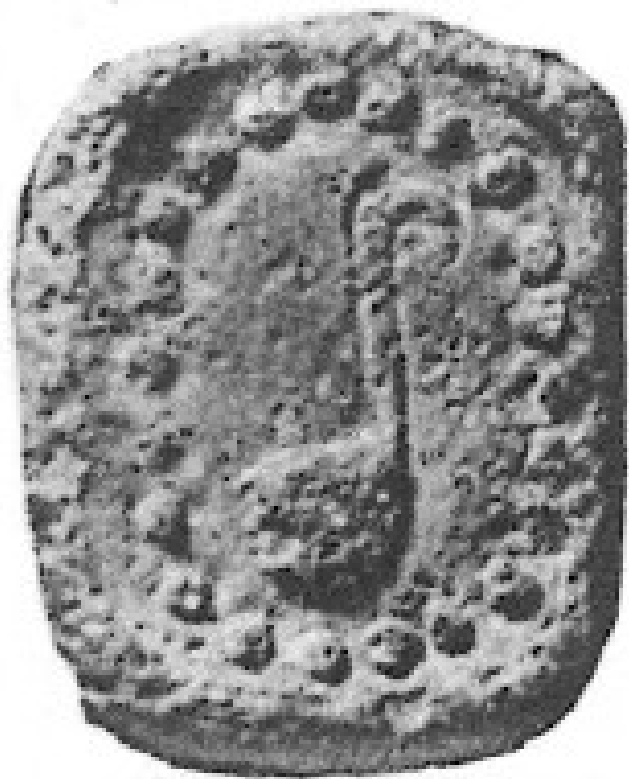
RTP 318



RTP 528



RTP 578



Фреска из пальмирского дома в Дура Европос.

Audley-Miller 2018, fig. 4



“Древности Пальмиры”.
Каталог выставки. Ленинград,
1986.

28. Мужская фигура (фрагмент
рельефа).
Известняк. Высота 44. № В 328.





Спасибо за внимание!